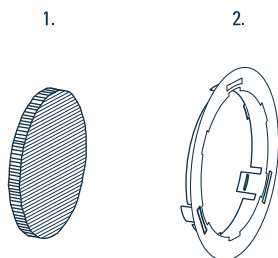
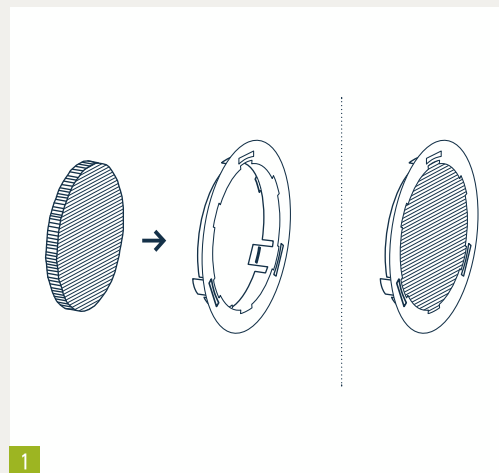


FILTER INSERT 100/125



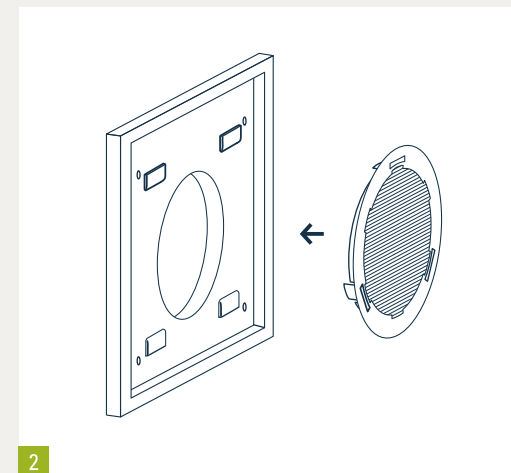
Filter and filter ring

Filter insert consisting of
1. 3M High Air Flow (HAF) filter material
2. Filter ring



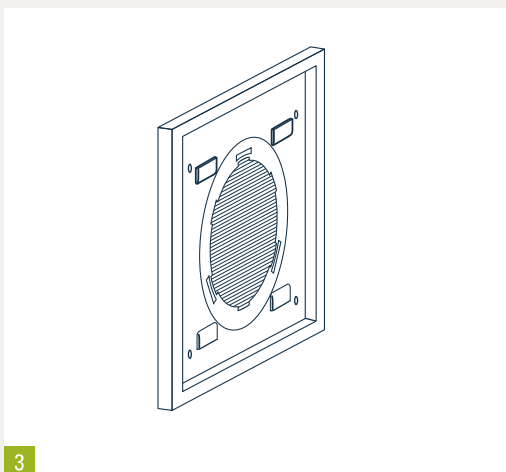
1

Insert the 3M HAF filter into the back of the filter ring as shown in Fig. 1.



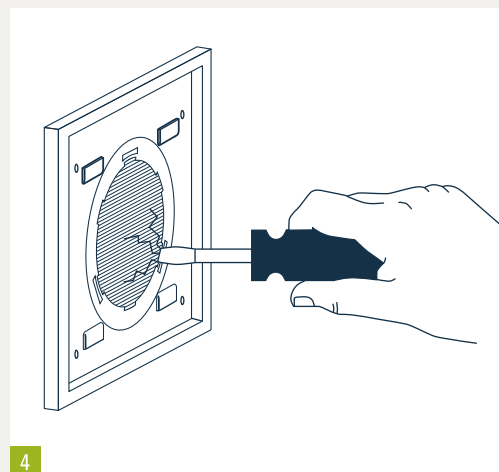
2

Press the filter insert with the filter into the front of the empty vent connecting piece (e.g. Vent ONE) until it clicks into place.



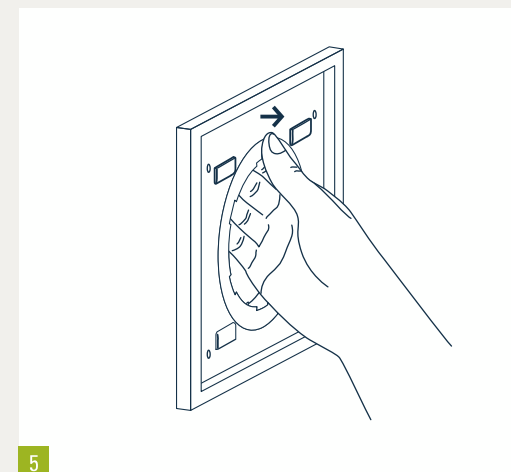
3

The filter insert is harmonized with Tecanno air vents and can be inserted into recessed and surface-mounted vents (100/125).



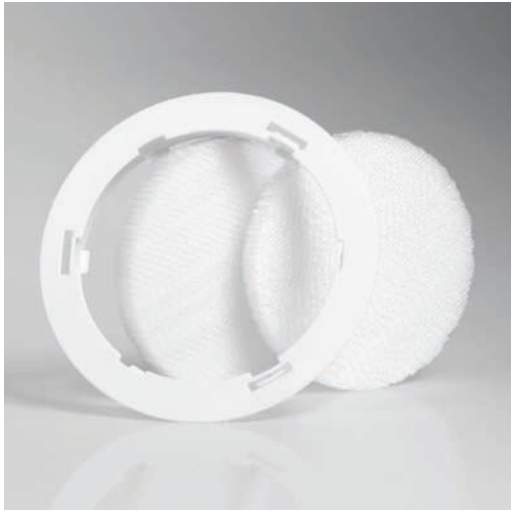
4

To replace the filter, insert a screwdriver or similar object into the slit between the filter ring and the filter material. Then use the screwdriver to pry the 3M HAF filter out of the ring. CAUTION: This may damage the filter insert and material.



5

To disassemble the filter ring, put your hand through the ring and use the index finger to reach behind one of the three long filter prongs. Use your thumb and index finger to pull the prong out of the anchor. After removing all three prongs, pull the ring out of the vent connecting piece. Re-use the filter ring with a replacement filter.



→ INSTALLATION

FILTER INSERT 100/125